

Making Every Gram Count!

10 Reasons Why You Need A Checkweigher!

Reason #1: Checkweighers Make You Money!

While checkweighers are often associated with compliance to regulations, they also boost your bottom line through the reduction of waste, tightening of tolerances, and helping to produce more consistent products. Checkweighers provide an immediate positive contribution to productivity and profits with most systems paying for themselves in a matter of a few months, weeks, or even days!

Reason #2: Avoid Costly Fines & Tarnished Brand Identify With 100% Weight Inspection

Ensure compliance with governmental regulations and industry standards through in-line checkweighing of all packages. 100% weight inspection is an integral part of a coordinated quality and process control program helping to deliver the process rigor needed in today's demanding market.



Reason #3: Keep Fillers In Tune With Active Checkweigher Feedback!

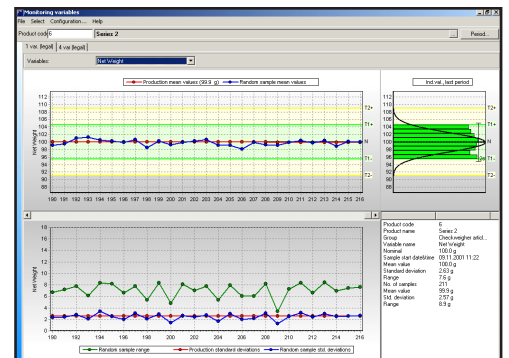
Keep a watchful eye over filler performance to prevent unwanted over and underfills through proactive feedback keeping filler heads properly adjusted. Checkweighers can be integrated directly with the filler control or networked to existing factory floor automation systems for complete and seamless feedback control.

Reason #4: Use Material Savings To Produce More Product & Profits

An accurate checkweigher will drive tighter production tolerances yielding less waste enabling more final product to be produced with the same amount of inventory!

Reason #5: Integrated Metrics Drives Process Improvements & Efficiencies

Checkweighers provide real-time monitoring of production processes including yield statistics & SPC trending all of which can be used for process improvements and operating efficiencies.



Reason #6: METTLER TOLEDO Weighing Performance

Using checkweighing as a tool to tighten tolerances & make processes more repeatable is a key ingredient in making a consistently high quality product which will delight your customers!

METTLER TOLEDO

What's A Gram Worth?

Reducing planned overfill of a package by 1 gram by using 100% weight inspection or through replacement of an inaccurate existing checkweigher with a higher performance solution yield impressive savings. A simple example using an inexpensive product valued at 0.1¢ per gram is shown below.

Package & Production Information

Package Label Weight: 450 grams
 Material cost = 0.1¢ per gram
 Line Rate = 200 ppm
 Line Utilization = 65%
 Shift = 8 hours
 Shifts Per Day = 2
 Production Days Per Year = 230

Savings Yielded By A 1 Gram Waste Reduction

0.1¢ Savings Per Package
 20¢ Savings Per Minute
 \$12.00 Savings Per Hour
 \$124.80 Savings Per Day
\$28,704.00 Savings Per Year

Plus over 60,000 additional packages, revenue, & profits that could have been produced with the saved inventory!

Reason #7: Labor Saving Operation

Use of static scales to spot check product is common to many operations; use of in-line checkweighing eliminates potential sampling errors & long term labor costs associated with these types of operations.

Reason #8: Fewer False Rejects, Less Rework, & Reduced Scrap

Processes that incorporate an accurate & well maintained checkweigher also find fewer products in their reject bins! Tighter tolerances lead to improved overall process quality thereby reducing the amount of production scrap and reworked product produced. False rejects are also minimized as checkweigher accuracies become more precise as zone settings become more refined and the potential zone of uncertainty is reduced.



Reason #9: Don't Risk Retailer Relationships!

Don't jeopardize contracts with Retailers by short shipping products or case counts. Checkweighers & case scales ensure multi-packs & case shipments are complete & correct!

Reason #10: Increased Overall Equipment Effectiveness

Overall Equipment Effectiveness (OEE) is enhanced through improvement of all three metrics "Availability, Performance, and Quality". 100% monitoring of the items produced provides valuable indications of process variations which leads to unexpected downtime events (Availability) and reduced line capacity (Performance) caused by out of tune upstream devices. Tighter production tolerances delivered through the use of checkweighing reduces overfills and underfills resulting in a higher yield of "Good" product from the production process.

**For more information contact your local METTLER TOLEDO HI-SPEED Representative
 or visit us at www.mt.com/hi-speed**

METTLER TOLEDO Hi-Speed
 5 Barr Road, Ithaca, NY 14850, USA
 Toll Free: 1-800-836-0836
 Tel: 1-607-257-6000
 Fax: 1-607-266-5232
 Email: hispeed@mt.com

www.mt.com/hi-speed

For more information