



CE-GRT Carton Erector with Gantry Robot Loader



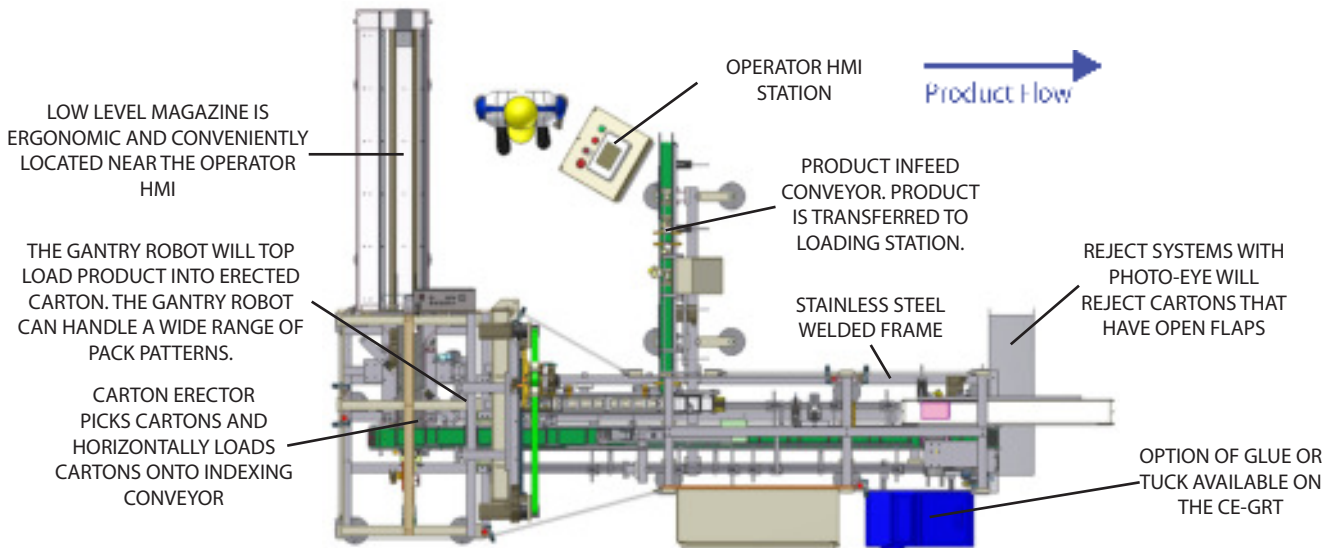
The CE-GRT is a robust and compact integrated packaging system. The CE-GRT features a unique combination of carton erecting and gantry robot technology. Two systems are typically needed to perform carton erecting and gantry loading. These two processes are included in one system, the CE-GRT. This unique feature reduces the overall footprint and lowers integration costs. Furthermore, the CE-GRT can handle auto bottom cartons and unique pack patterns with ease. Custom designed in-feed systems can be tailored to fit your existing production lines and your product. Rust proof stainless steel construction, servo motors on main drives, and reject systems are also featured on the CE-GRT.

Features

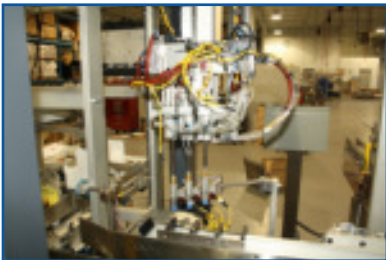
- » Gantry robot can pick and place numerous product applications such as bags, pouches, and vials with precision and ease
- » HMI screens are operator friendly and help with fault diagnostics
- » Robust frame can handle a wide range of operating speeds
- » Full guarding with safety interlocks
- » Option of glue or tuck closures
- » Reject systems can be installed on the CE-GRT improving customer satisfaction
- » Modular design allows for future retrofits



Typical Floor Plan



Key Components



Gantry robot pick head can be set up to handle a wide range of pack patterns and products. The above exemplified pick head was designed to nest pouches in a special manner.



The CE-GRT's modular design allows retrofits and optional equipment to be integrated into the machine. Code daters, printers, bar code readers and more can be easily integrated.

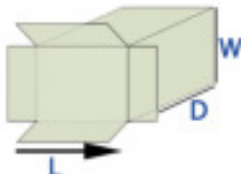


Servo motors on all major drives ensure smooth operation. In addition, feedback on fault diagnostic and positioning accuracy are accessible with the servo loader.

Carton Size Range

Standard (Special)	L	W	D
Size Ranges (Inches)	min. .5	.5	5 (2.5)
	max. 14	6	14 (20)

* If size outside carton size range please check with AFA Representative



Process

