

# AFA Systems

Packaging Automation



**Rockwell  
Automation**  
**Machine  
Builder**

**MEMBER**  
**PMMI**  
*Leading companies.  
Leading solutions.*

## **TL-GDP - High Speed Gravity Drop Load Case Packer**

The TL-GDP integrates accumulation, case erecting, case loading and sealing into one compact machine. The servo driven TL-GDP is ideally suited for accurate loading of cases and crates. Smooth movements are guaranteed to ensure low mechanical strain and speeds up to 100 products per minute. On-screen programming allows for easy adding of loading patterns. Sealing methods on the TL-GDP include tape, hot melt glue, cold glue, or a combination of cold glue and hot melt glue. All these features add up to an efficient case packer for any production line.

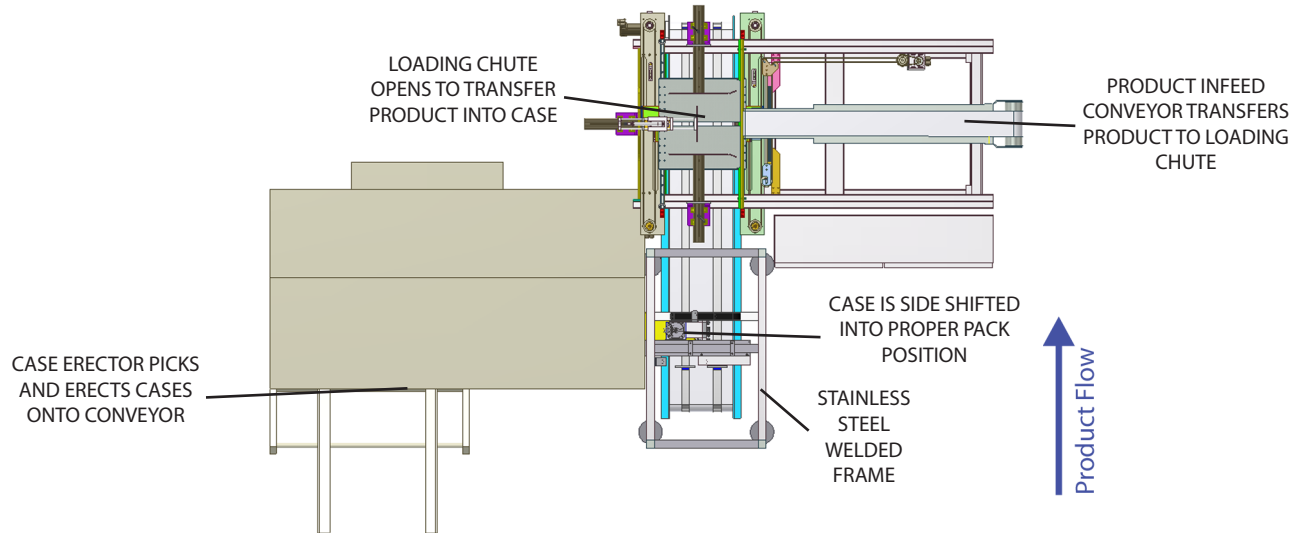
### **Features**

- » Laser cut components and PLC controls
- » Heavy-duty rugged construction designed for durability, reliability, and 24/7 operation
- » Intermittent motion top load case packer allows for smooth operation and limited downtime
- » NO CASE/NO LOAD feature in place
- » Speeds up to 25 cases per minute
- » Easily enhance the case packer with auxiliary equipment such as seal testers, printers, code daters, and detection systems
- » Stainless steel construction



**[www.afasystemsinc.com](http://www.afasystemsinc.com)**

## Typical Floor Plan



## Key Components



**Nordson ProBlue Glue Systems** increase uptime and consistency while decreasing waste which advances sustainability and lowers costs.



**State-of-the-art Allen Bradley panel view screens** offer high precision when case loading and assist in changeover and troubleshooting.



**Discharge belts at the end of the TL-GDP** reduce carton marking when transferring a carton onto another system. Discharge belts are also an excellent way to reduce carton jamming.

## Case Size Range

Standard		L	W	D
Size Ranges (Inches)	min.	6	6	6
	max.	20	20	20

\* If size outside case size range please check with AFA Representative



## Process

